

BL75 Automatic Bag Loader

Description

The Cryovac® BL75 is a fully automatic high speed bag loader designed for dairy, and smoked and processed meats. The BL75 provides a smooth operation which eliminates the repetitive and labor intensive process of loading product into bags by featuring automatic advancing and opening of taped bags and a high speed belt to insert product into the opened bag. The Sealed Air Food Care Cryovac® packaging system including a bag loader, rotary vacuum chamber, shrink tunnel and proprietary Cryovac® Oxygen Barrier shrink bags creates the ultimate finished package to protect and highlight the product.

Key features and benefits



OPERATIONAL
EFFICIENCY

- Machine achieves up to 45 PPM depending on product type and size
- Eliminates labor required to load product into bags
- Eliminates labor positions that are prone to injuries and repetitive motion
- Automatic Placement onto platen of rotary vacuum chamber machine (Optional)
- Flexibility in production as able to run a variety of bag and product sizes
- Quick change tooling for various product sizes / shapes
- Full Washdown with Stainless Steel construction
- All belts can be easily removed for cleaning without the use of tools
- Uses Cryovac® Oxygen Barrier shrink bags in roll or boxed format



FOOD
SAFETY

- Runs with Cryovac® Oxygen Barrier Bags which provide superior oxygen barrier and aggressive sealant technology to protect your product from the outside environment











SHELF LIFE
EXTENSION

- When used with Cryovac® Oxygen Barrier Bags and vacuum packaging, protects the product's freshness, color and flavor throughout distribution

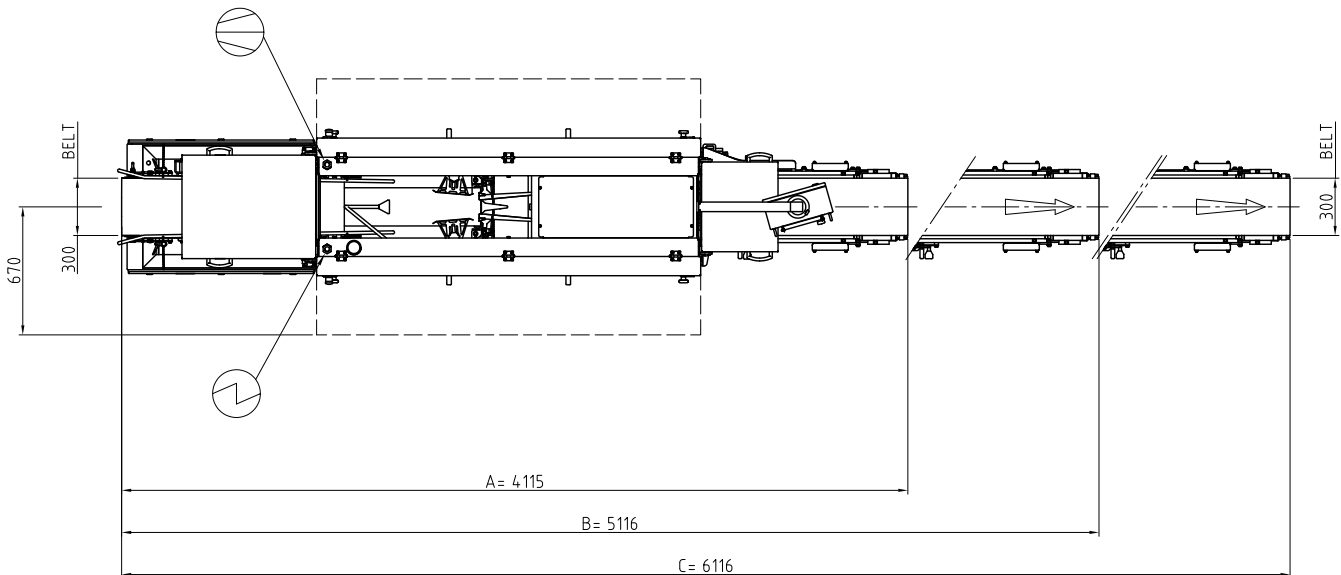


BL75 Automatic Bag Loader

Technical data

- | | |
|--------------------------------------------------------------------------------------------------------------------------------------------------------------------------------------------------------------------------------------------------------------------------------------------------------|------------------------------------------------------------------------------------------------------------------------------------------------------------------------------------------------------------------------------------------------------------------------------------------------------------------------------------------------|
| <p> Machine Dimensions
Max Length: 241 in (6122 mm)
Width: 32.1 in (815 mm)
Height: 75.2 in (1910 mm)</p> | <p> Electrical Voltage
Electrical voltage: 400 - 460 V +/-10%, 3 Phase + earth,
50/60 Hz, 4 kWh max.
Air: 6 bar, 25scfm, 1/2" dia. line</p> |
| <p> Weight:
3100 lbs (1400 kg)</p> | <p> No. of operators:
1 to monitor only</p> |
| <p> Bag details
Bag Width: 5" - 14" (130 mm - 350 mm)
Bag Length: 8" - 23" (200 mm - 600 mm)
Bag types: All Cryovac specifications
WB/WF or PB/PF</p> | <p> Working speed
Up to 4.41 lbs (2 kg): length < 9.84 in (249.94 mm) = 45 ppm
4.41 lbs (2 kg) - 8.82 lbs (4 kg): length < 13.78 in (350 mm) = 40 ppm
8.82 lbs (4 kg) - 15.43 lbs (7 kg): length < 15.75 in (398 mm) = 25 ppm</p> |
| <p> Product dimensions
Product Width: 2" - 9" (50 mm - 250 mm)
Product Length: 4" - 15" (100mm - 400 mm)
Product Height: 2" - 6" (50 mm - 170 mm)
Product Weight: 0.5 - 15 lbs. (Up to 7kg)</p> | <p> Compressed air
Pressure: 0.6 MPa (6 bar)
Consumption: 36 Nm 3/h</p> |

Line layout example



Contact

foodcare.na@sealedair.com