

600[™] Horizontal

Horizontal wide bagging system

Horizontal configuration
dedicated to bulky or fragile
products and ecommerce
returns processing



Autobag®

BRAND AUTOMATED SYSTEMS

600™ Horizontal

Horizontal wide bagging system

Horizontal configuration
dedicated to bulky or fragile
products and ecommerce
returns processing

FEATURES AND BENEFITS

- Capable of running 400mm wide bags with a large load area for order preparation
- Horizontal configuration ideal for fragile products and apparel
- Touch screen accesses operator tutorials, help and diagnostics.
- 600mm conveyor enabling a transition onto secondary conveyance systems.
- The system can be networked for full pack station integration to facilitate central monitoring and the extraction of productivity information.
- Capable of being configured for left or right-hand access.
- The system features a simple design with very few moving parts, reducing lifetime cost and improving uptime.

SPECIFICATIONS

Weight	259 kg
Overall Size	H: 1361 mm W: 874 mm L: 1692 mm
Electrical	110/240 VAC, 50/60 Hz, 650 Watts (VA) max
Air Feed	5 CFM/80 psi of clean, dry air
Pass-through	150 mm max
Bag thickness	35-100 µm
Bag widths	100-400 mm
Bag lengths	140-900 mm



TYPICAL APPLICATIONS



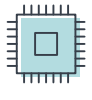
Apparel



Medical Equipment



Plumbing



Electronic

SUSTAINABILITY



As a maker of flexible packaging products, we recognise the need for greater awareness and involvement in creating a more sustainable planet – from the point of manufacture to the point of disposal.

For over a decade, we have been producing environmentally responsible products for our customers. We introduced GeoTech®, a line of pre-consumer reprocessed films that forever changed the packaging industry. We have introduced innovative, lighter gauge films that reduce the amount of material required without compromising packaging performance. In addition, our machinery technology continues to evolve with new, state-of-the-art components and engineering designed to reduce energy consumption.